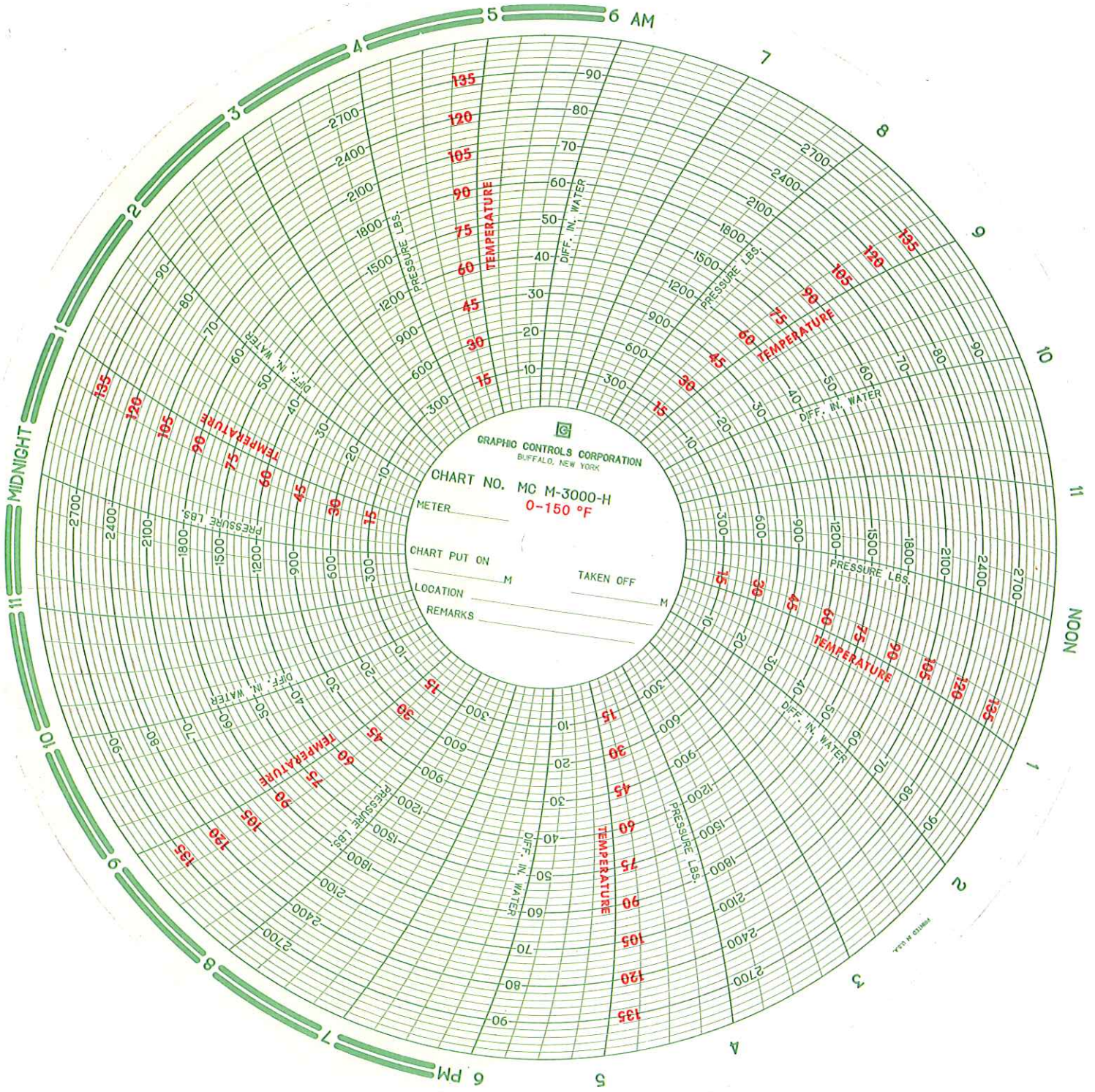
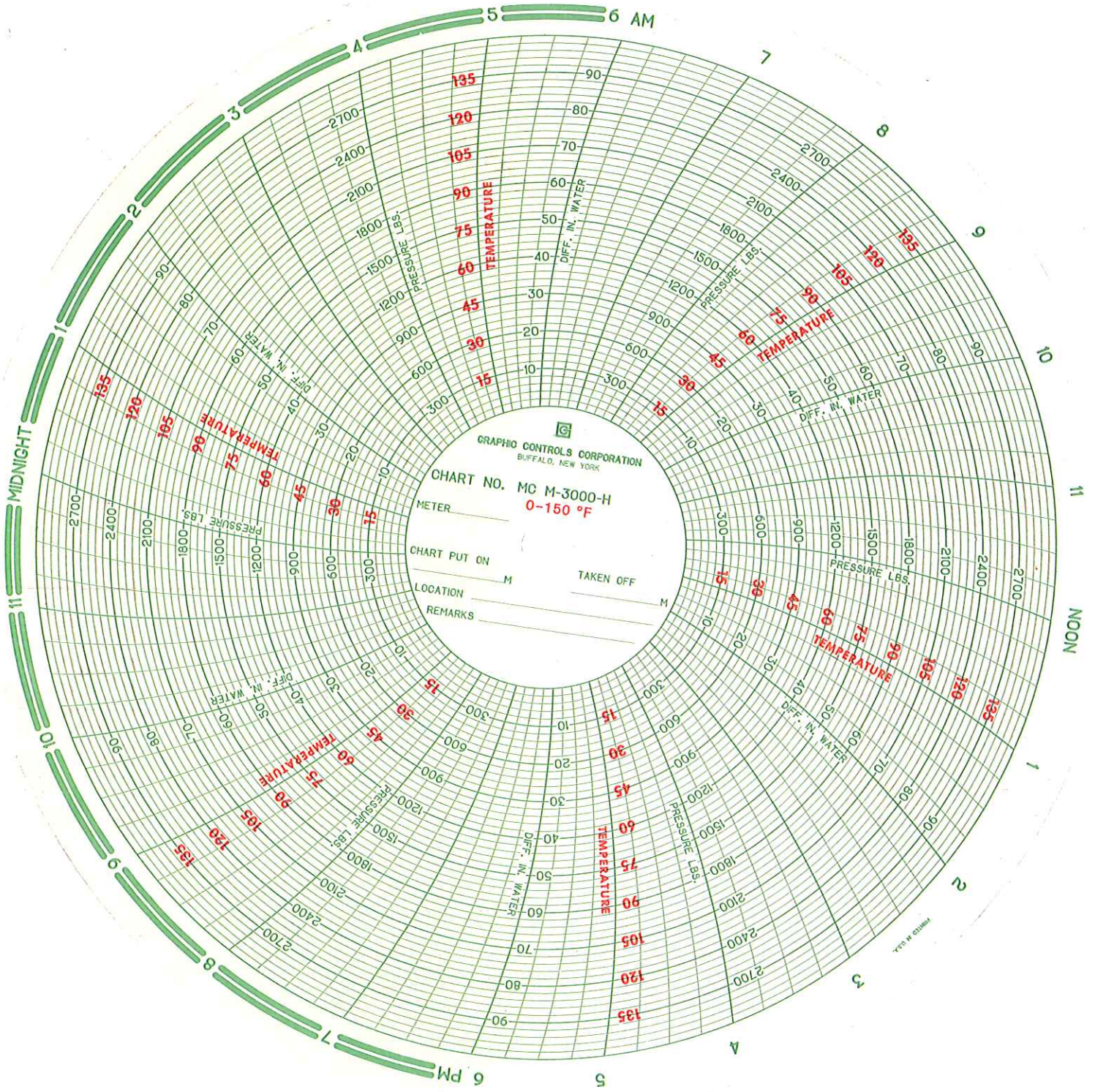


Hydrostatic Test Record

Hydrostatic Test Record							
Location of Test Point:				to:			
Owner				Contractor:			
Inspector:				Equipment: DDW..			
				Recorder 1:			
Size pipeline:				Recorder 2:			
Length:				Gauge:			
				Gauge:			
Maxiumum Test Pressure:							
Date:							
Time:	Pressure	Temp.	Remarks	Time:	Pressure	Temp.	Remarks
0030 h				1230 h			
0100 h				1300 h			
0130 h				1330 h			
0200 h				1400 h			
0230 h				1430 h			
0300 h				1500 h			
0330 h				1530 h			
0400 h				1600 h			
0430 h				1630 h			
0500 h				1700 h			
0530 h				1730 h			
0600 h				1800 h			
0630 h				1830 h			
0700 h				1900 h			
0730 h				1930 h			
0800 h				2000 h			
0830 h				2030 h			
0900 h				2100 h			
0930 h				2130 h			
1000 h				2200 h			
1030 h				2230 h			
1100 h				2300 h			
1130 h				2330 h			
1200 h				2400 h			
Foreman tel#:				Inspector tel#:			
Supervisors:							
Day:				Night:			
Day:				Night:			





Pipeline TEST Sept 25/08

BULL OILFIELD Instrument Rentals

742698 Alberta Ltd

11450 89 Ave Grande Prairie Alta. T8V 7M9

Meter Inspection

DIGITAL PRESSURE INDICATOR			
UNIT #	Pressure Range	Serial #	Sensor serial #
DDW -41	0-10,000 psig	70536531	2279934

DEADWEIGHT PRESSURE	Digital READING	error		
1000	1000	0		
2000	2000	0		
3000	3000	0		
4000	4000	0		
5000	5000	0		
6000	6000	0		
7000	7000	0		
8000	8000	0		
9000	9000	0		
10,000	10,000	0		
0	0	0		

batteries checked	<i>1.545</i> volts	Deadweight Ser.#	12824-0
swivels/bushings	<i>✓</i>		
NIST Compliance # P-8600/8599 A			
The calibration of this instrument has been accurately compared with reference pistons whose areas have been determined by the National Institute of Standards And Technology			

DATE CALIBRATED September 19, 2008 **Cer#9/19/08ddw41**

Note

Tech. Signature *Steph Karsue*

BULL OILFIELD Instrument Rentals
 742698 Alberta Ltd
 11450-89 Ave Grande Prairie Alta. T8V 7M9

CERTIFICATE OF CALIBRATION

PRESSURE TEMPERATURE RECORDER		
UNIT #	Pressure Range	Temp Range
R-23	0-2000 PSI(G)	0-150 * F

DEADWEIGHT PRESSURE	RECORDER READING	error	TEMP BATH	RECORDER READING
400	400	0	32	32
800	800	0	63	63
1200	1200	0	146	146
1600	1600	0		
2000	2000	0		
1800	1800	0		
1400	1400			
1000	1000	0.		
600	600	0.		
200	200			
0	0			

clock & battery	<u>1.552</u> volts	hose	<input checked="" type="checkbox"/>	Deadweight	12824-0
swivel/bushing	<input checked="" type="checkbox"/>	pens	<input checked="" type="checkbox"/>	Ser.#	
NIST Compliance # P-8600/8599 A					
The calibration of this instrument has been accurately compared with reference pistons whose areas have been determined by the National Institute of Standards And Technology					

DATE CALIBRATED September 5, 2008 Cer#9/5/08R23

NOTE:

Tech. Signature

